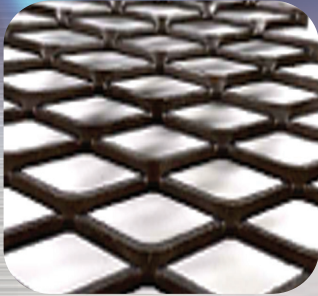




مصنع ميغا للمعادن  
MEGA METAL FACTORY



## Introduction

• Mega Metal factory w.l.l is considered as one of the leading manufacturers of corrugated sheet , Sandwich Panels, Profile Sheet & expanded metal sheet , fencing net , barbed wire , throughout the State of Qatar. Working closely with our customers, we provide advice for the best solution for each project.

• We have installed the latest continuous sheet metal production machinery, giving us the ability to manufacture sheeting, trims and flashings to our customer's requirements.

• We are the pioneer in Qatar having continuous production line of corrugated sheet, Sandwich Panels, Profile Sheet with production capacity of 10,000 Square meters per day.

• We committed to fulfil any design requirements, we offer an extensive range of panel cores, including PIR & PU. Combining the cores with the facing of your requirements, we can assure your building will not only have structural strength and superior thermal insulation but will also have a visually pleasant and consistent finish.

Why choose us:

- \* production turnaround times
- \* Local made
- \* Excellent customer service
- \* Quality high end product
- \* Our products are quick and easy to install
- \* Our facility is accredited to ISO9001 standards
- \* "We believe in providing quality products at competitive prices delivered when promised. We also offer technical and product support to make sure we satisfy the needs of our customers.





مصنع ميغا للمعادن  
MEGA METAL FACTORY



## Our Factory

- \* Our factory is in the new industrial area, Qatar
- \* Our products are manufactured from superior materials using modern technology. A long operating life and incomparable quality are characteristics of every product we make. To ensure this quality, the raw material we use is the best grade of steel and aluminum available in the market.
- \* Our material and components are acquired from suppliers using just-in-time methodology. The production process starts with raw material, continues through our production section. After stringent quality control, the products are ready for shipping to customers worldwide.







مصنع ميكا للمعادن  
MEGA METAL FACTORY

## Quality Standards

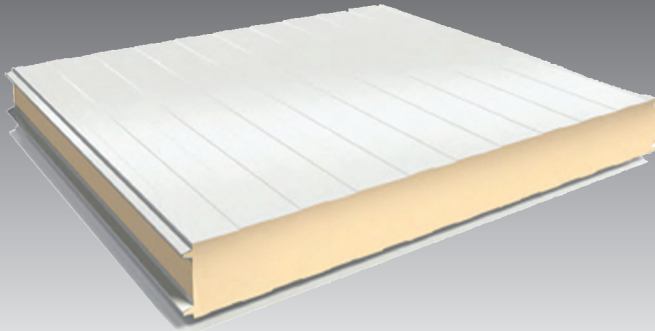
- \* At Mega Metal Factory, we are committed to meeting our customers' needs and requirements. We are dedicated to continual improving the effectiveness of our Quality Management System.
- \* The company believes that its market expects a continually improving service. We aim to continually improve the service we provide to meet our client's requirements and to produce finished work that we can justifiably be proud of.
- \* The factory aims to achieve the above by implementing a management system that complies with the international standard of good practice BS EN ISO 9001. It also includes a commitment to meet the requirements of our clients, as well as legal and regulatory requirements. Also, to continual development of the system and helping to ensure it remains effective.
- \* Only by providing an outstanding service and product quality will we achieve our aims of long term success and sustained improvements.
- \* All personnel within the company are responsible for the quality of their work. The factory provides training and has established systems to assist all personnel to achieve the standards required. While we endeavor to produce work and offer a service that we can be proud of, we must recognize that we don't always achieve our own standards. When a customer complaint, we are committed to investigating the complaint and will do our best to put right all justified complaints.
- \* The policy, organization and procedures necessary to achieve the required standards are described in our Quality Management System.
- \* The Quality Manager is responsible for monitoring the quality system and reports regularly to the Managing Director on the system's implementation, status and effectiveness.
- \* The objectives of our company are set out in the Business Plan. Objectives for individual jobs are to carry out he works to the satisfaction of the client and in accordance with the contract as agreed with the client.
- \* We are proactive, reliable partners with our customers; their satisfaction is vital to our success.



مصنع ميكا للمعادن  
MEGA METAL FACTORY

## Products

### Sandwich Panel



Mega Metal Factory's specialized in production, sales and export of Polyurethane (PU) & Polyisocyanurate (PIR) Insulated Sandwich Panel & Rockwool. Sandwich Panels are produced in a continue line with 3 types of insulation materials including such as, Polyurethane (PUR), Polyisocyanurate (PIR) & Rockwool insulation thicknesses. As external and internal surfaces of sandwich panel painted galvanized They are manufactured as polyester, plastisol, PVDF and food safe painted according to the needs of the Project. They can be manufactured in all RAL codes. Panel Tech's Insulated Roof and Wall Sandwich Panels are responding all needs such as thermal insulation, air tightness, hygiene, aesthetics, and fire insulation. Acoustic insulated Roof and Wall Panels for sound insulation Wall Panel for container and prefabricated buildings and Cold Room Panels for cold storages.

Some of the benefits of using Mega Metal Factory's sandwich panels are:

\* Excellent thermal insulation. Thermal conductivity of panels with polyisocyanurate foam core is  $\lambda = 0,022 \text{ W/m}^*\text{K}$ .





## مصنع ميغا للمعادن MEGA METAL FACTORY

- \* Excellent protection against weather conditions, maintaining properties and appearance for many years. When coating is properly selected according to local conditions, several years' durability of panels can be reached without any problem.
- \* Complete seal against precipitations, snow and dampness. Perfectly finished joints ensure complete waterproofness for many years, if installation standards are followed.
- \* Sound absorption. Properly selected core material can give perfect noise insulation parameters. They are particularly important if insulation of outside noise, reduction of industrial noise propagation to the outside of the building or noise reduction within the building is required.
- \* Fire resistance properties according to the needs. Using proper type of core can ensure the fire resistance. This enables protection of escape routes and separation of fire compartments from each other.
- \* Easy and quick installation, low construction costs. As a result, lower operating costs over the years. A 50mm thick PU/PIR foam panel has the same heat-transfer coefficient  $U$  as a 75 cm thick aerated concrete wall, 60 cm thick structural clay tile wall or a 190 cm thick brick wall.
- \* Good strength parameters. Roof panels can withstand the load of snow and wind depending on their thickness and climatic zone, with supports' span of more than 3 m. In most cases, wall panels can be used with supports' span of up to 6 m. This results in real savings in terms of the supporting structure, and thus overall costs of the entire building.
- \* We have managed to combine all the above benefits to the user with benefits to the natural environment. Total power input in the production of the material used for thermal insulation of the building, on average, pays for itself after two or three years from installation. Materials used in production are recyclable. Steel can be easily reused. Waste core materials can also be recycled, while production of the panels itself is not harmful to the environment.





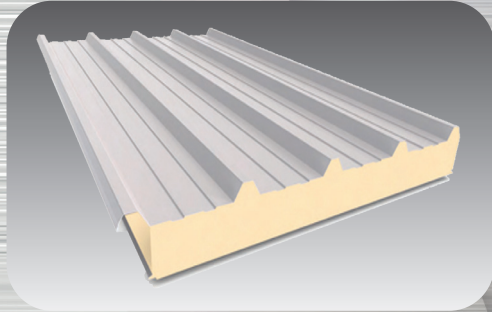
مصنع ميجا للمعادن  
MEGA METAL FACTORY

## Roof Sandwich Panel

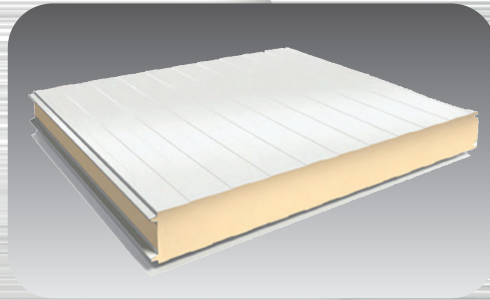
Roof panel with PIR (polyisocyanurate) and PU (polyurethane core). High surface profile.

Application:

Suitable for roofs of industrial buildings: production halls, storage buildings, commercial halls, shopping centers, farm facilities. Steel sheet lining with anticorrosive protection depending on the intended use.



## Wall Sandwich Panel



Roof panel with PIR (polyisocyanurate) and PU (polyurethane core). High surface profile.

Application:

Suitable for roofs of industrial buildings: production halls, storage buildings, commercial halls, shopping centers, farm facilities. Steel sheet lining with anticorrosive protection depending on the intended use. Low Ribbed Wall

Sandwich panel with PIR (polyisocyanurate) and PU (polyurethane core).

Application:

Suitable for building external and internal walls of industrial buildings: production halls, storage buildings, commercial halls, shopping centers, farm facilities. Vertical or horizontal installation. Steel sheet lining with anticorrosive protection depending on the intended use.

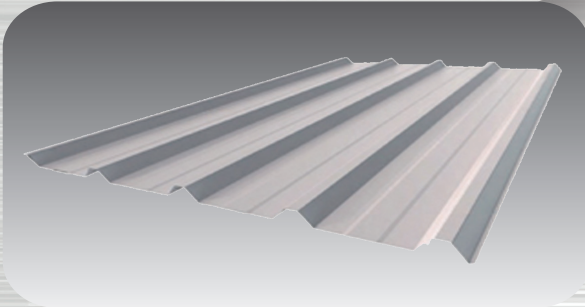


مصنع ميكا للمعادن  
MEGA METAL FACTORY

## Corrugated Profile Sheets

Profiled steel or corrugated sheets are used in various roof constructions. Profile Sheets can be produced from galvanized sheet metal as coil coating painted, in various thicknesses and forms. They are used as single layer without thermal insulation or, as multi-layer roof and wall applications where thermal insulation is laid down in between two corrugated sheets.

We offer our customers with Steel Roofing Solutions that are highly result oriented and quality focused. Our team of experts work closely with customers to understand their necessity and offer the services accordingly. We ensure all the services are offered within a stipulated time frame to ensure they accomplish the need of customers. Our complete range of services can be availed by our customers at market leading price.



We bring forth the finest range of Color Profile Sheets for our valued clients. Developed with advent technology, these color profile sheets are suitable to cover different warehouses, sheds and temporary houses. We offer these color profile sheets in different sizes and colors.

- \* GI Zinc coated steel profile sheets 0.3 to 0.9 mm thick as per ASTM a 653 for GI & ASTM a 792 for Alum Zinc Different grades can be supplied on request.
- \* Painting is baked regular modified enamel polyester, with 5micron primer and 20micron coat on the weathering side and 5/7micron primer on the reverse PVDF, Silicon, Modified Polyester, Plastisol & ARS coating on request is applicable.



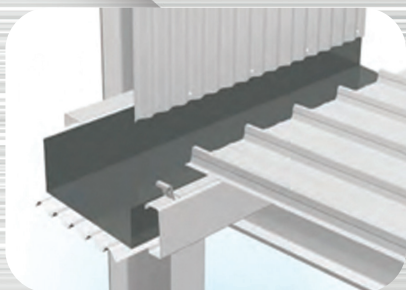


مصنع ميجا للمعادن  
MEGA METAL FACTORY

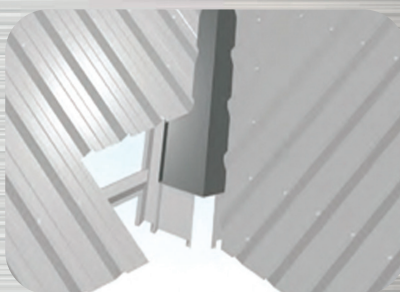
### Flashings



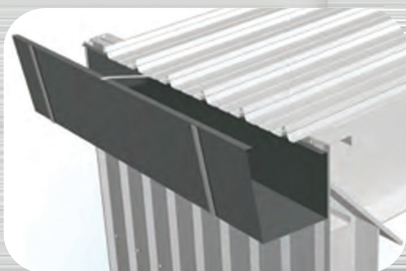
### Box Gutters



### Valley Gutters



### Industrial Eave Gutters



### Corner Flashings

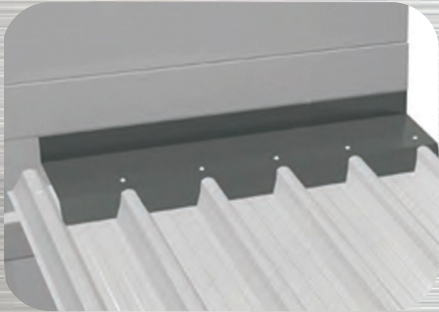






مصنع ميكا للمعادن  
MEGA METAL FACTORY

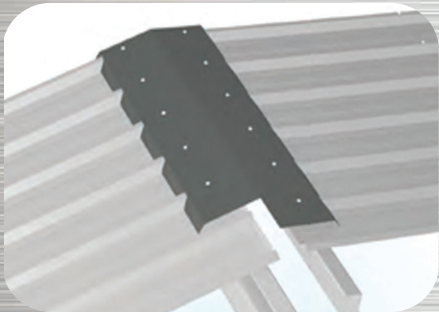
**Apron Flashings**



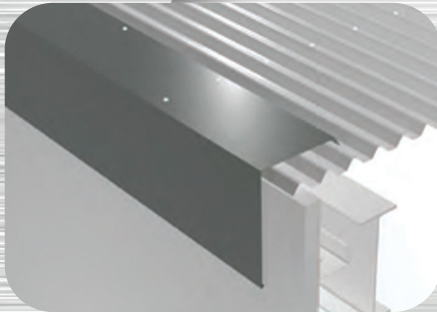
**Parapet Capping**



**Ridge Flashings**



**Barge Capping**







# مصنع ميجا للمعادن MEGA METAL FACTORY

## What is expanded metal?

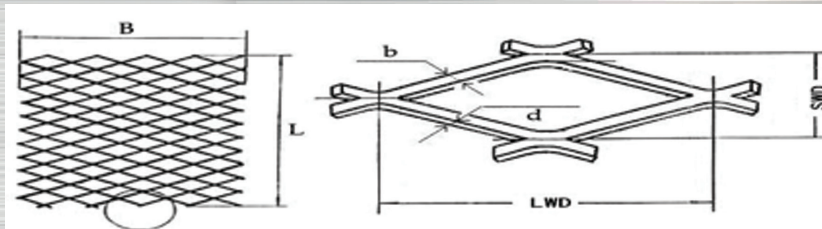
Expanded metal mesh types includes raised expanded steel mesh (also called standard or regular expanded metal) and flat expanded metal.

Raised expanded metal mesh has diamond openings with slightly raised surface. Flattened expanded metal mesh is manufactured by passing the standard expanded sheet through a cold roll reducing mill, forming diamond openings with flat surface.



## Expanded metal specification

- Materials: carbon steel, low carbon steel, iron, aluminum, stainless steel, copper, titanium
- Expanded metal thickness: 0.3mm-20mm
- Expanded metal panels sizes: 1/2, 3/4, 1' x 2', 1' x 4', 2' x 2', 2' x 4', 4' x 4', 4' x 8', 5' x 10', or made to size.
- Surface treatment: hot-dip galvanizing, anti-rust paint, powder coated, PVC coated, etc.







# مصنع ميجا للمعادن MEGA METAL FACTORY

## Chain Link Fence (Fencing net)

Chain-link fence is a type of woven fence, made of galvanized or plastic- coated steel wire.

### Product description

Chain link fence is a type of woven fence, made of galvanized or PVC coated steel wire

Material

Low carbon steel wire, stainless steel wire, aluminum alloy wire.

Specification:

Mesh Size: 1"-4".

Wire Diameter:

BWG20-BWG6.

Weaving:

Woven diamond pattern provides strong, durable and flexible construction. The closely spaced diamond mesh construction gives your fence linear.

Strength and springy texture to protect horses from injury and prevent predators.

From entering paddocks and pastures.

Feature:

With uniform mesh hole and flat surface, chain-link fence has the following advantages: beautiful appearance, great corrosion resistance, long service lifespan.

Type:

Classified by the surface treatment: Electro-galvanized chain-link mesh, Hot-dip galvanized chain-link mesh, PVC-coated chain-link mesh, PE-coated chain-link mesh, Stainless chain-link mesh.

### SPECIFICATION

Mesh	1"	1.5"	2"	2-1/4"	2-3/8"	2-1/2"	2-5/8"	3"	4"
	25mm	40mm	50mm	57mm	60mm	64mm	67mm	75mm	100mm
Wire diameter	18# - 13#	16# - 8					18#-7#		
	1.2 - 2.4mm		1.6mm - 4.2mm				2.0mm-5.00mm		
Length of the roll	0.50m - 100m(or more)								
Width of the roll	0.5m - 5.0m								

Materials and specifications can be made according to customers' detailed requirements.





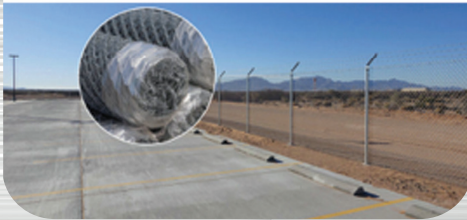
# مصنع ميجا للمعادن

## MEGA METAL FACTORY

### APPLICATION

Usage:

Chain Link Fence is extensively used as fences for playground and gardens, super highway, railway, airport, port, residence, etc.



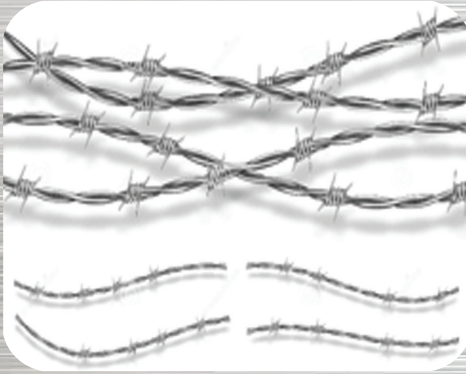




# مصنع ميكا للمعادن MEGA METAL FACTORY

## PACKING DETAILS:

### Barbed wire



Barbed wire is made with high quality low carbon steel wire with the automatic twist machine. It is commonly used in grass field edges, railway, high way, prison and the privacy fields for separation.

### Product description

Is made with high quality low carbon steel wire with the automatic twist machine. It is commonly used in grass field edges, railway, high way, prison and the privacy fields for separation.

#### Feature:

- \* Keep safety
- \* Fast and easy installation
- \* Pleasant in appearance
- \* Erosion and oxidation resistant

#### Material:

Low carbon steel wire, Galvanized steel wire, PVC coated iron wire in blue, green, yellow and other colors

#### Patterns available:

Single Twisted Barbed Wire/ Double Twisted Barbed Wire/ Traditional Twisted Barbed Wire.





# مصنع ميكا للمعادن MEGA METAL FACTORY

## Specification:

Type	Wire Gauge (SWG)	Barb Distance(cm)	Barb Length (cm)
Electric galvanized barbed wire,	10# x 12#		
Hot-dip zinc plating barbed wire	12# x 12#	7.5-15	1.5-3
	12# x 14#		
	14# x 14#		
	14# x 16#		
	16# x 16#		
	16# x 18#		
PVC coated barbed wire,	Before coating	After coating	
PE barbed wire	1.0mm-3.5 mm	1.4mm-4.0mm	
	BWG11#-20#	BWG8#-17#	7.5-15
	BWG11#-20#	BWG8#-17#	1.5-3
	PVC PE coating thickness: 0.4mm-0.6mm; different colors or length are available at customers request.		



# مصنع ميكا للمعادن MEGA METAL FACTORY

## Application:

Barbed Wire is also named Barb Wire, it is widely used by in military field, agriculture, prisons, detention houses, government buildings and other national security facility; Barbed Wire is also used as fence for cottage and society fence, and other private buildings



## PACKING DETAILS:

In coil of 25 kilos or 50 kilos net, lined with P.V.C strips, then wrapped with P.V.C or hessian cloth. (According to Customers' Need)







مصنع ميجا للمعادن  
MEGA METAL FACTORY

## OUR SERVICES

### Bending Services



#### Range of application:

Forming of sheet metal

#### Method:

Between upper- and lower beam, the RAS GIGA bend 76.30 the sheet will be inserted horizontally to the preset stop position. Through pressing against the upper beam, the work piece will be fixed and subsequently formed by a predefined rotation of the bending beam. These procedures are CNC-controlled. By use of a piano hinge, box bendings up to 150 mm height can be produced.

#### Main technical data:

**Types of material:** all kinds of sheets

**Min. material thickness:** >0 mm

**Max. material thickness:** 6,0 mm (sheet steel)

**Max. bending length:** 3,200 mm

**Max. bending radius:** 45 degree

Box bending up to 150 mm height, up to 3 mm material thickness (steel)



مصنع ميكا للمعادن  
MEGA METAL FACTORY

## Shearing Services



We are the service provider of Shearing Services to our clients.

**Our FACTORY** is profoundly involved in offering Shearing Services, where we are able to provide cutting services of up to thickness of 1mm to 32mm. Our shearing machine comprises of electro-hydraulic overload protection with safety features in order to determine trustable and longer functionality. Capable of shearing thick and thin sheets without any distortion, the hydraulic shearing machine used by our service team also comes with the replaceable hardened liner to ensure at least wear. Our services team consists of highly skilled workforce, which works under the supervision of experienced engineers and other professionals.







مصنع ميغا للمعادن  
MEGA METAL FACTORY

## Steel Plate Drilling Services



**We are the service provider of Drilling Services to our clients**

Steel plate drilling is a cold cutting process that utilises a drill bit in order to cut or enlarge a small circular hole within a solid work-piece. The drill bit will typically be a multi-point rotary cutting tool, which is pressed against the steel and rotated at thousands of revolutions per minute. This action forces the cutting edge away from the material and removes any chips from the hole as it is drilled. A drilled hole is largely characterised by the sharp edge on the entrance side.







## مصنع ميجا للمعادن MEGA METAL FACTORY

### STRUCTURAL STEEL FABRICATION WORKS

Structural steel fabrication is one of the prime specialties that MEGA METAL FACTORY is recognized for. We are a highly experienced steel contractor, ensuring excellent results in a variety of services including fabrication, steel drafting and details, surface treatment, steel delivery and installation. Each job is treated differently and we take pride in offering flexible and personalized solutions for structural steel. Structural steelwork is generally used to form the skeleton frame of a building or other building's asset. The structural steelwork frame buildings are highly resilient and have appropriate strength if properly designed and correctly executed. This typically consists of columns and beams which are riveted, bolted, or welded together. MEGA METAL FACTORY specializes in Contracting and Steel Works in Steel Fabrication, Steel Detailing, Designing and Installation. Structural steel is a classification of steel used to make building materials such as beams, rails and bars. The special features of structural steel aim to influence the longevity of a structure and improve the safety of its occupants. The erection of structural steelwork involves the assembly of steel components into a frame at the site. These processes involve lifting and placing the components, which are then connected to each other by bolting or welding.

Steel structure is mainly a structure made of steel, which is one of the main types of building structures. Steel is characterized by high strength, light weight, excellent overall hardness and strong deformation. It is therefore particularly suitable for large-scale, high-rise buildings. The Steel Structure is a steel beam, steel column, steel truss, section steel and other components made of steel plate, welds, bolts or rivets connect each component and part. MEGA METAL FACTORY is a structural steel fabrication work company in Qatar. We are experts in the engineering, fabrication, and erection of heavy, large, and complex steel structures mainly for petrochemical, marine, and construction industries. Our engineering department is staffed by a team of adept qualified engineers and draftsmen with expertise in all aspects of structural steel fabrication and erection. Structural steel fabrication is a combination of several pieces of steel to form different structures of predefined sizes and shapes assembled into buildings, industrial equipment, tools, and other final products. Structural steel fabrication contains various processes like cutting, bending, and assembling to create different products.







# مصنع ميجا للمعادن MEGA METAL FACTORY

## TYPES OF STRUCTURAL STEELS

The types of structural steel fabrication used extensively in the construction industry are;

1. Angled sections
2. Tubular hollow sections
3. Flat sections
4. Parallel flange channels
5. Rectangular hollow sections
6. Square hollow sections
7. Tapered flange beams
8. Universal beams
9. Universal columns

In the field of structural steel fabrication, angled sections are used especially

in the construction of steel roof trusses and filler joist floors. Both equal and unequal angled sections are available in the market. Being available in a wide range of sizes, they are often used in various industries. The parallel flange channels are to engineer and manufacture used as structural members of steel-framed structures. It consists of a web with two equal flanges. The steel tubes are used as columns and compression members and in some cases, it also acts as a tension member in tubular trusses. The hollow steel sections can be square, rectangular, circular, or elliptical. It is an efficient structural section that can be used as compressive members.

Tapered flange beams are shaped like the letter I, so it is used as a cross-section for girders. The universal beam is also known as the I beam or H beam. It has two horizontal elements with a vertical element as the web. The universal column also looks like a universal beam. But they are mainly used for building columns because of their load carrying capabilities.







# مصنع ميجا للمعادن MEGA METAL FACTORY

## CAR PARKING SHADES

### -MANUFACTURING

Our production space is equipped with the most cutting-edge technology and complete set of facilities to sew and cut fabric panels to perfection. And leverage only high frequency machinery. In addition, our workshops are equipped with all the latest equipment, including painting facility, drilling units, roll benders, and welding stations. Strongest seams performed to the individual fabric heat sealing radio frequency (RF) Sealing are utilized in the fabrication of our tensile shades structures, since high class threads and sewn seams offer the most durable life expectancy in the market. The fabric cutting, sewing, and paving crews employ the most advanced computer controlled cutting

Technology, which can provide weight tolerance and load analysis.

### -INSTALLATION

We offer shades and tent installation services across the QATAR. It is not just about the structure – which offers maximum protection, our designs also look aesthetically pleasing to the human eye. Whether you want shades and tent installation in your home, office, in a parking lot, a Masjid, or even a stadium, MEGA STEEL CO. will provide you with diversified options that will help you decide the perfect fit for you. Furthermore, our shades and tents give protection from harmful UV rays and keep our customers safe from sun, and rain.

